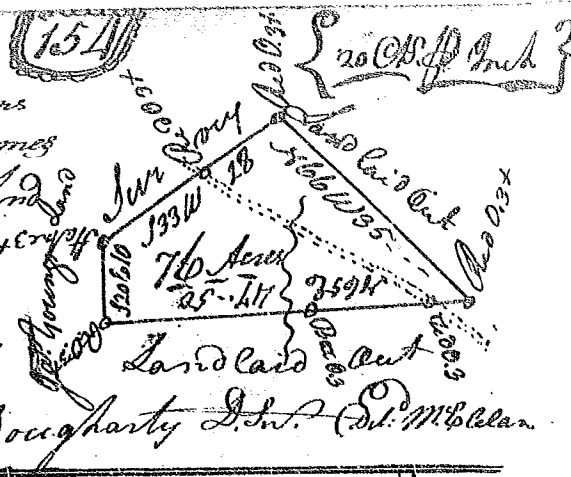
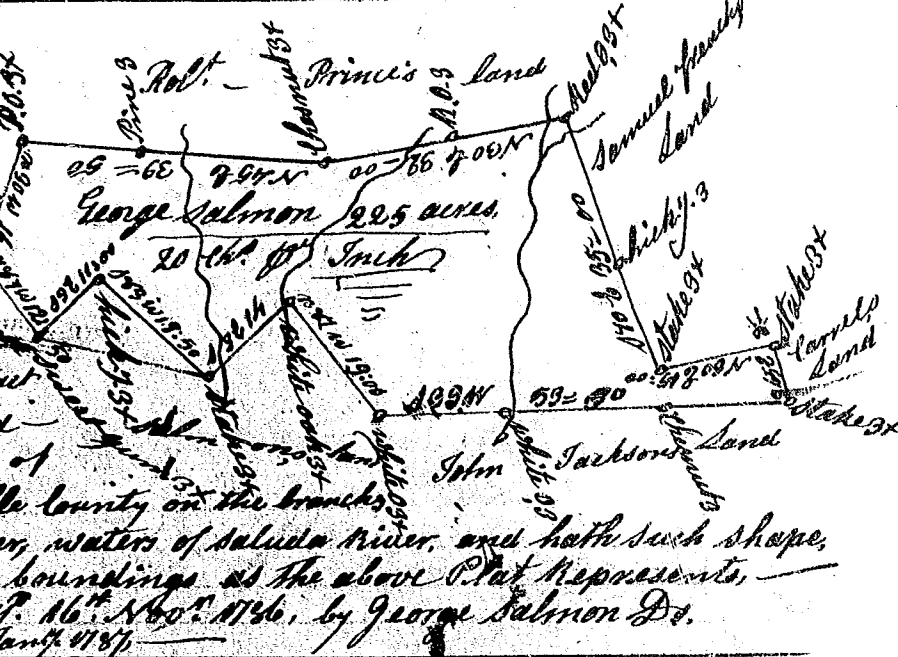


State of S. Carolina Pursuant to a warrant  
 from John Thomas Esq. Comr. of Locations  
 I have admeasured & laid out unto James  
 M. Master a tract of seventy six acres of land  
 Situate in the District on the waters of  
 Commons Creek & hath such shape, marks,  
 Buttings & Boundings as the above Plat  
 Represents. Surveyed the 8<sup>th</sup> Sep<sup>r</sup> 1786  
 Recorded the 24<sup>th</sup> Jan<sup>y</sup> 1787 James Dougharty J. S. D. (S. D. McLean)



State of S. Carolina  
 Pursuant to a  
 warrant from  
 John Thomas Esq. Comr. of Locations  
 Dated 5<sup>th</sup> Oct. 1786, I have admeasured  
 and laid out unto  
 George Salmon a tract  
 of two hundred and  
 twenty five acres of  
 land in Greenville County on the branches  
 of the Charon River, waters of Saluda River, and hath such shape,  
 Marks, buttings & boundings as the above Plat Represents.  
 Surveyed 16<sup>th</sup> Nov<sup>r</sup> 1786, by George Salmon D.  
 Recorded the 25<sup>th</sup> Jan<sup>y</sup> 1787



State of S. Carolina  
 Pursuant to a warrant from  
 John Thomas Esq. Comr. of Locations  
 Dated 15<sup>th</sup> Sept. 1786, I have admeasured  
 and laid out unto William  
 Hasland a tract of two hundred  
 acres of land, on the bounty, as a  
 soldier in the 3<sup>d</sup> Regiment of this State  
 on the bridge fork of Gilders Creek, waters of Enoree River,  
 Bounded E<sup>t</sup> by Joshua Gilliam's  
 land, all other sides vacant,  
 and hath such shape, form, and Marks as the above Plat Represents.  
 Recorded 26 Jan<sup>y</sup> 1787, Surveyed 3<sup>d</sup> Oct. 1786, by Jas. Wofford D.  
 Del. W. Melton

